

EAGLE

Oil-Free

Rotary Screw Compressors



37-90 kW

DALGAKIRAN



3,8-15,5
m³/min

37-90
kW

7-8,5-10
bar



EAGLE SERIES

*Oil-Free, Direct Coupled, Fixed/Variable Speed
Rotary Screw Compressors*

We offer more sustainable, Class 0-certified, fully oil-free air solutions for the food, beverage, chemical and electronics industries.

General Features

- IE4 efficiency-class electric motors
- Soundproofed canopy
- Electrostatic coated canopy components for high corrosion resistance
- Electric motor protection to prevent overload
- Air-cooled and water-cooled options available
- Fixed and variable speed drive options
- Soft starter at fixed speed models
- Direct coupled drive system

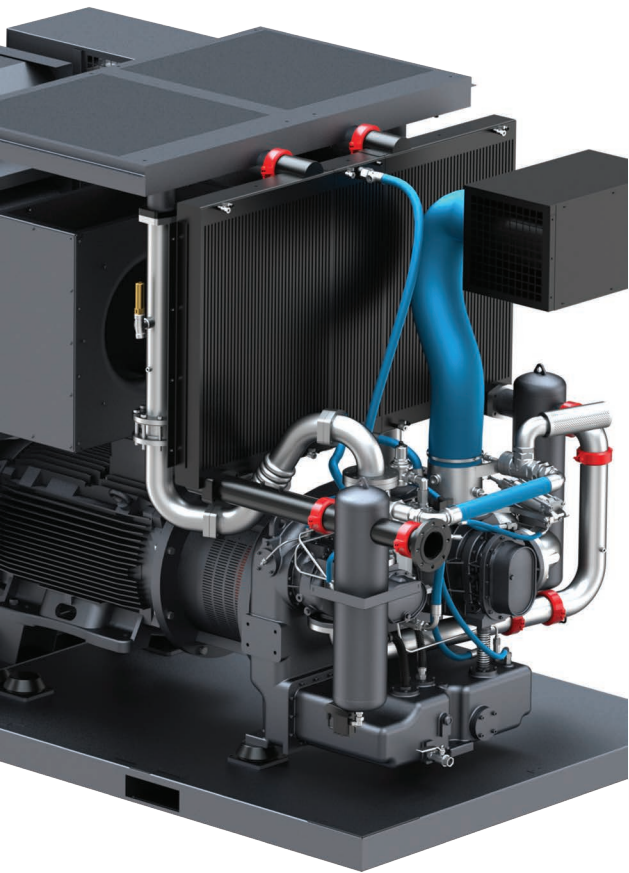
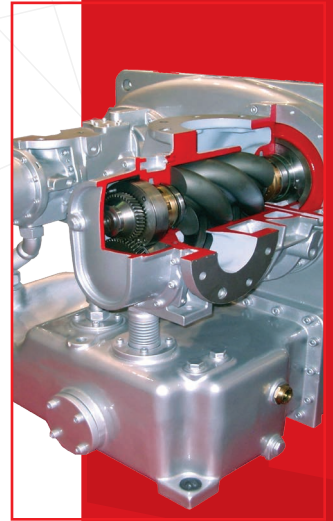
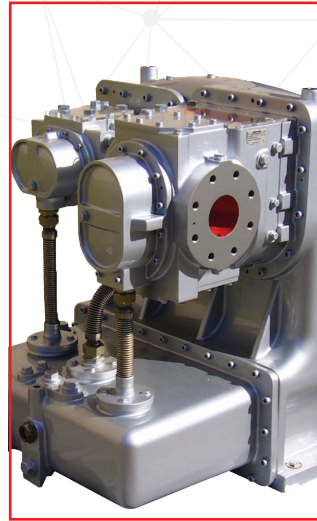
Advantages

- Produces less filter waste than oil-injected compressors, which reduces your maintenance costs down.
- It can be used safely in sensitive industries such as food and pharmaceutical for the highest hygiene.
- Highly durable performance suitable for working in the harshest operational conditions.
- Models with VSD technology save up to 35% energy and reduce your energy costs.
- Special venturi design prevents rapid pressure fluctuations and high-frequency vibrations.



Screw Block

- Two-stage screw block
- Bearing system developed with the latest technology ensures long life and vibration-free operation
- High level sealing system ensures high performance even during long operation periods
- Synchronizing gears for contact-free power transmission between the rotors
- Specially coated rotors and rotor housing internal parts for minimum gap tolerance and high efficiency
- Stainless steel rotors to eliminate the risk of corrosion and locking, for a long service life
- Ultracoat coating for high temperature resistance



Cooling System

- Two-stage cooling with pre-cooler system made of stainless steel pipes and fins
- After-cooler with aluminium bar and plate system
- Easy to maintain and clean
- Washable panel filter
- Optimum in-cabinet air circulation to keep the motor and screw block cool

Intake Regulator

- Easy-to-maintain and reliable valves not affected by pollution and condensation
- Hydraulic intake regulators are more reliable and easier to maintain than pneumatic intake regulators

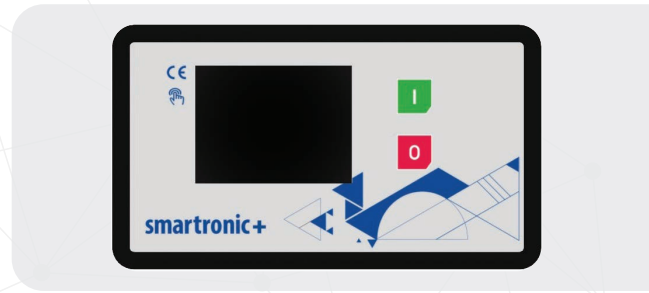
Water Separator

- Improved design for highly efficient water separation at the cooler outlet with minimum pressure loss
- Energy-efficient and zero-loss electronic drain system drains the water before the compressed air is sent to the dryer



Controller

- Without the need for an external main controller, ability to work synchronized for up to 5 compressors
- Weekly scheduler for starting / stopping the machine at 3 different time intervals can be individually set for each day of the week
- Dual PID feature on inverter-equipped models can run simultaneous PID for temperature and pressure
- Pressure PID on inverter-equipped models ensures energy-efficient operation by maintaining the pressure at the required level
- Temperature PID on inverter-equipped models controls the fan speed to maintain the screw block's most efficient operating temperature
- On inverter-equipped models, all inverter and compressor control data are managed from a single point
- Internal ModBus communication
- User-friendly on-screen interface
- Alarm log records the last 20 alarms
- Periodic maintenance warnings and log records



Certificates

- Our Eagle series compressors provide fully oil-free compressed air at the ISO 8573-1 (Class 0) standard and have been tested and approved by "TÜV Rheinland" Germany.
- Passed the performance tests in compliance with ISO 1217 Annex C and Annex E.



**ISO 8573-1
Class-0**

It is designed in accordance with sensitive and accurate production conditions.

It protects the environment and saves energy.

It is produced in accordance with all global standards and regulations.

It prevents damage to your products and the contamination of your production lines.

Therefore, it eliminates unnecessary machine downtime.

It guarantees the high quality compressed air you need.



PHARMACEUTICAL



HEALTH



ELECTRONICS



FOOD & BEVERAGES

Model	Pressure		Capacity*		Motor kW/HP	Connection	Dimensions [Air Cooled / Water Cooled] (mm)		
	bar	psi	m ³ /min	cfm			Width	Length	Height
EAGLE 37	7	100	6	212	37/50	G 2"	1721/1740	2588/2690	2160
	8,5	125	5,3	187					
	10	145	4,8	170					
EAGLE 45	7	100	7,5	265	45/60	G 2"	1721/1740	2588/2690	2160
	8,5	125	6,5	230					
	10	145	5,9	208					
EAGLE 55	7	100	9,4	332	55/75	G 2"	1721/1740	2588/2690	2160
	8,5	125	8,6	304					
	10	145	7,5	265					
EAGLE 75	7	100	12,7	449	75/100	G 2"	1721/1740	2588/2690	2160
	8,5	125	11,8	417					
	10	145	10,2	360					
EAGLE 90 B	7	100	15,5	547	90/125	DN80	1936/1920	3110	2450/2200
	8,5	125	13	459					
	10	145	13	459					

Model	Pressure		Capacity*				Motor kW/HP	Connection	Dimensions [Air Cooled / Water Cooled] (mm)		
	bar	psi	Min. m ³ /min	Min. cfm	Max. m ³ /min	Max. cfm			Width	Length	Height
EAGLE 55 VSD	7	100	3,8	134	9,1	321	55/75	G 2"	1721/1740	2588/2690	2160
	8,5	125	3,7	131	8,3	293					
	10	145	3,7	131	7,5	265					
EAGLE 75 VSD	7	100	6,2	219	12,8	452	75/100	G 2"	1721/1740	2588/2690	2160
	8,5	125	6,2	219	11,9	420					
	10	145	6,2	219	11	389					
EAGLE 90 VSD	7	100	6,2	219	14,6	516	90/125	G 2"	1721/1740	2588/2690	2160
	8,5	125	6,2	219	14,2	501					
	10	145	6,2	219	13,2	466					

- Unit performances measured in reference conditions which are 1 bar absolute air pressure, %0 relative humidity, 20°C inlet air temperature, 71°C thermostatic valve set temperature and use of Smartoil.

- Dalgakıran reserves its rights to make changes in its products and specifications without prior notice.

* Refers to free air delivery measured according to ISO 1217:2009, Annex C and E standard.

100%
OIL-FREE
COMPRESSED
AIR



