

EAGLE

Oil-Free
Rotary Screw Compressors



37-315 kW

DALGAKIRAN





3,8-48,8
m³/min

37-315
kW

7-8,5-10
bar

EAGLE SERIES

*Oil-Free, Direct Coupled, Fixed/Variable Speed
Rotary Screw Compressors*

We offer more sustainable, Class 0-certified, fully oil-free air solutions for the food, beverage, chemical and electronics industries.



General Features

- IE4 efficiency-class electric motors
- Soundproofed canopy
- Electrostatic coated canopy components for high corrosion resistance
- Electric motor protection to prevent overload
- Air-cooled and water-cooled options available
- Fixed and variable speed drive options
- Soft starter at fixed speed models
- Direct coupled drive system



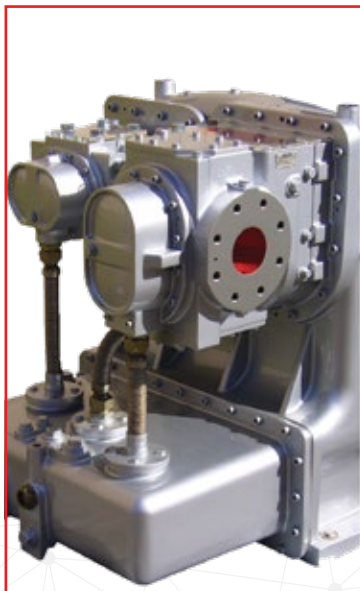
Advantages

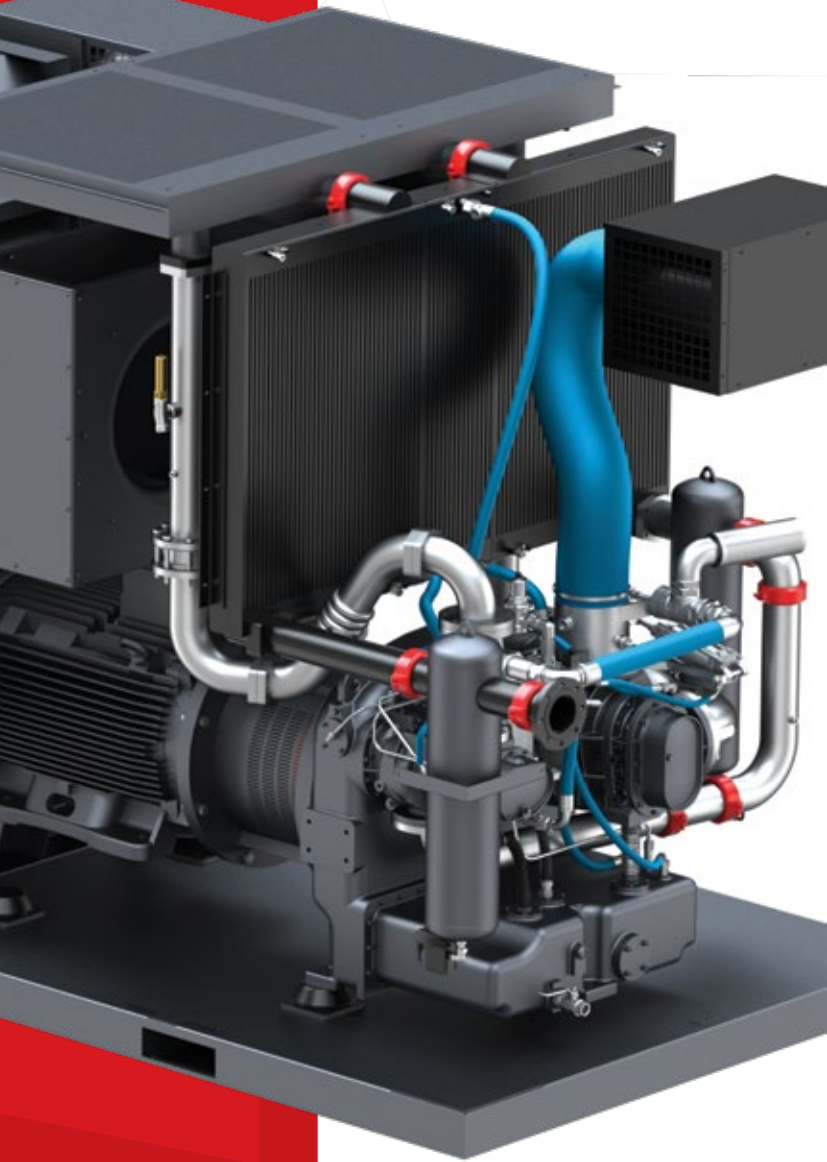
- Produces less filter waste than oil-injected compressors, which reduces your maintenance costs down.
- It can be used safely in sensitive industries such as food and pharmaceutical for the highest hygiene.
- Highly durable performance suitable for working in the harshest operational conditions.
- Models with VSD technology save up to 35% energy and reduce your energy costs.
- Special venturi design prevents rapid pressure fluctuations and high-frequency vibrations.



Screw Block

- Two-stage screw block
- Bearing system developed with the latest technology ensures long life and vibration-free operation
- High level sealing system ensures high performance even during long operation periods
- Synchronizing gears for contact-free power transmission between the rotors
- Specially coated rotors and rotor housing internal parts for minimum gap tolerance and high efficiency
- Stainless steel rotors to eliminate the risk of corrosion and locking, for a long service life
- Ultracoat coating for high temperature resistance





Cooling System

- Two-stage cooling with pre-cooler system made of stainless steel pipes and fins
- After-cooler with aluminium bar and plate system
- Easy to maintain and clean
- Washable panel filter
- Optimum in-cabinet air circulation to keep the motor and screw block cool

Intake Regulator

- Easy-to-maintain and reliable valves not affected by pollution and condensation
- Hydraulic intake regulators are more reliable and easier to maintain than pneumatic intake regulators

Water Separator

- Improved design for highly efficient water separation at the cooler outlet with minimum pressure loss
- Energy-efficient and zero-loss electronic drain system drains the water before the compressed air is sent to the dryer





Certificates

- Our Eagle series compressors provide fully oil-free compressed air at the ISO 8573-1 (Class 0) standard and have been tested and approved by “TÜV Rheinland” Germany.
- Passed the performance tests in compliance with ISO 1217 Annex C and Annex E.

100%
OIL-FREE
COMPRESSED
AIR



ISO 8573-1
Class-0

It is designed in accordance with sensitive and accurate production conditions.

It protects the environment and saves energy.

It is produced in accordance with all global standards and regulations.

It prevents damage to your products and the contamination of your production lines.

Therefore, it eliminates unnecessary machine downtime.

It guarantees the high quality compressed air you need.



PHARMACEUTICAL



HEALTH



ELECTRONICS



FOOD & BEVERAGES

Model	Pressure		Capacity *		Motor	Connection	Dimensions [Air Cooled / Water cooled] (mm)		
	bar	psi	m ³ /min.	cfm	kW/HP		Width	Length	Height
EAGLE 37	7	100	6	212	37/50	G 2"	2588/2593	1640	2160
	8,5	125	5,3	187					
	10	145	4,8	170					
EAGLE 45	7	100	7,5	265	45/60	G 2"	2588/2593	1640	2160
	8,5	125	6,5	230					
	10	145	5,9	208					
EAGLE 55	7	100	9,4	332	55/75	G 2"	2588/2593	1640	2160
	8,5	125	8,6	304					
	10	145	7,5	265					
EAGLE 75	7	100	12,7	449	75/100	G 2"	2588/2593	1640	2160
	8,5	125	11,8	417					
	10	145	10,2	360					
EAGLE 90	8,5	125	12,7	449	90/125	G 2"	2588/2593	1640	2160
	10	145	12,6	445					
EAGLE 90 B	7	100	15,5	547	90/125	DN80	3197	1840	2450/2200
	8,5	125	13,1	464					
	10	145	13	462					
EAGLE 110	7	100	19,5	689	110/150	DN80	3197	1840	2450/2200
	8,5	125	17,6	622					
	10	145	15,5	547					
EAGLE 132	7	100	22,3	788	132/180	DN80	3197	1840	2450/2200
	8,5	125	20,9	738					
	10	145	19,4	685					
EAGLE 160	7	100	25,4	897	160/220	DN80	3197	1840	2450/2200
	8,5	125	25,3	893					
	10	145	24	848					
EAGLE 185	7	100	28	989	185/250	DN80	3197	1840	2450/2200
	8,5	125	28	989					
	10	145	28	989					
EAGLE 200	7	100	36	1271	200/270	DN100	3797/3544	2140	2715/ 2450
	8,5	125	34	1200					
	10	145	28,3	999					
EAGLE 250	7	100	44,3	1564	250/340	DN100	3797/3544	2140	2715/ 2450
	8,5	125	40,5	1430					
	10	145	35,8	1264					
EAGLE 315	7	100	48,7	1720	315/430	DN100	3797/3544	2140	2715/ 2450
	8,5	125	48,7	1720					
	10	145	44,2	1560					

- Unit performances measured in reference conditions which are 1 bar absolute air Pressure, %0 relative humidity, 20°C inlet air temperature, 71°C thermostatic valve set temperature and use of Smartoil.

- Dalgakiran reserves its rights to make changes in its products and specifications without prior notice.

* Refers to free air delivery measured according to ISO 1217:2009, Annex E standard.

Model	Pressure		Capacity *				Motor kW/HP	Connection	Dimensions [Air Cooled / Water cooled] (mm)		
	bar	psi	Minimum m³/dk	Minimum cfm	Maximum m³/dk	Maximum cfm			Width	Length	Height
EAGLE 55 VSD	7	100	3,8	134	9,1	321	55/75	G 2"	2588/2593	1640	2160
	8,5	125	3,7	131	8,3	293					
	10	145	3,7	131	7,5	265					
EAGLE 75 VSD	7	100	6,2	219	12,8	452	75/100	G 2"	2588/2593	1640	2160
	8,5	125	6,2	219	11,9	420					
	10	145	6,2	219	11	389					
EAGLE 90 VSD	7	100	6,2	219	14,6	516	90/125	G 2"	2588/2593	1640	2160
	8,5	125	6,2	219	14,2	501					
	10	145	6,2	219	13,2	466					
EAGLE 110 VSD	7	100	9,1	321	20,4	720	110/150	DN80	3197	1840	2450/2200
	8,5	125	10,3	364	18,5	653					
	10	145	10,3	364	17,4	614					
EAGLE 132 VSD	7	100	10,4	367	22,2	784	132/180	DN80	3197	1840	2450/2200
	8,5	125	10,4	367	21	742					
	10	145	10,3	364	19,6	692					
EAGLE 160 VSD	7	100	10,7	378	26,9	950	160/220	DN80	3197	1840	2450/2200
	8,5	125	10,6	374	25,5	901					
	10	145	10,6	374	23,5	830					
EAGLE 185 VSD	7	100	14	494	29,6	1045	185/250	DN80	3197	1840	2450/2200
	8,5	125	14	494	29,5	1042					
	10	145	13,9	491	27,7	978					
EAGLE 200 VSD	7	100	17,4	614	36,2	1278	200/270	DN100	3797/3540	2140	2715/2450
	8,5	125	17,3	611	33,3	1176					
	10	145	17,2	607	30,4	1074					
EAGLE 250 VSD	7	100	18,9	667	44,6	1575	250/340	DN100	3797/3540	2140	2715/2450
	8,5	125	18,8	664	41,3	1458					
	10	145	18,7	660	38,2	1349					
EAGLE 315 VSD	7	100	22,9	809	48,8	1723	315/430	DN100	3797/3540	2140	2715/2450
	8,5	125	22,9	809	46,6	1646					
	10	145	22,9	809	46,3	1635					

- Unit performances measured in reference conditions which are 1 bar absolute air Pressure, %0 relative humidity, 20°C inlet air temperature, 71°C thermostatic valve set temperature and use of Smartoil.

- Dalgakiran reserves its rights to make changes in its products and specifications without prior notice.

* Refers to free air delivery measured according to ISO 1217:2009, Annex E standard.



Controller

- Without the need for an external main controller, ability to work synchronized for up to 5 compressors
- Weekly scheduler for starting / stopping the machine at 3 different time intervals can be individually set for each day of the week
- Dual PID feature on inverter-equipped models can run simultaneous PID for temperature and pressure
- Pressure PID on inverter-equipped models ensures energy-efficient operation by maintaining the pressure at the required level
- Temperature PID on inverter-equipped models controls the fan speed to maintain the screw block's most efficient operating temperature
- On inverter-equipped models, all inverter and compressor control data are managed from a single point
- Internal ModBus communication
- User-friendly on-screen interface
- Alarm log records the last 20 alarms
- Periodic maintenance warnings and log records